

Appendix G

Open House #2 Display Boards

Zephyr Farms Limited

- Zephyr Farms Limited is the owner of the Brooke-Alvinston Wind Farm.
- Zephyr Farms Limited is owned by Oneworld Energy Inc., a Canadian-based international renewable energy company, through their Canadian wind development subsidiary Green Breeze Energy Inc.
- Green Breeze Energy Inc. was one of the first Ontario-based wind energy developers, establishing operations in 2003.



Imagery Source: CanWEA.

Purpose of the Open House

- To share the results of the Draft Renewable Energy Approval (REA) Reports that were released for public review and comment on December 16, 2010.
- To update you on the status of the Project and the REA process.
- To answer questions regarding the Draft REA Reports and other future work.
- To receive the community's input and feedback on the Draft REA Reports for consideration by the Study Team as Zephyr Farms finalizes the reports for submission to the Ministry of Environment (MOE).

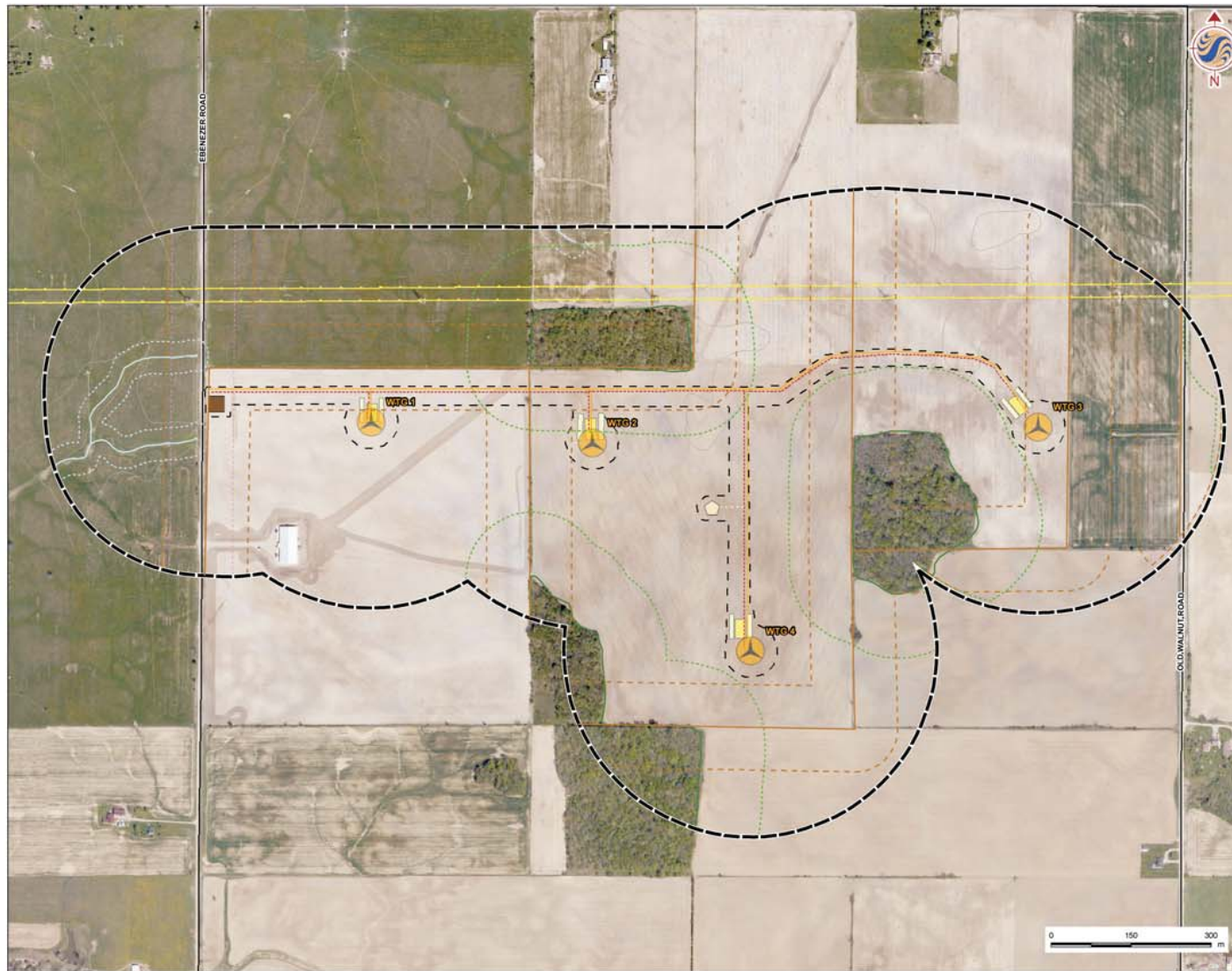


Project Overview

- The project has been awarded a Power Purchase Agreement with the Ontario Power Authority (RESOP 11836).
- Four 2.5 MW Samsung wind turbines, for a name plate capacity of 10 MW.
- Additional components are access roads, electrical collector lines (underground), and a switching station.
- Turbines will meet all required setbacks from non-participating receptors.
- All project components will be situated on privately owned land and municipal right-of-way.



Imagery Source: CanWEA.



- Legend**
- 300m Zone of Investigation/Project Study Area
 - Project Location
 - Existing Features**
 - Roads
 - Existing Transmission Line
 - Contour (metres ASL)
 - Property Line
 - Cultural/Natural Features and Water Bodies**
 - Watercourse (as per MNR base mapping)
 - Wooded Area (as per LIO base mapping)
 - Facility Components**
 - Proposed Wind Turbine Location
 - Met Tower
 - Switching Station
 - Access Roads
 - Underground Collector Line/ Fiber Optic Data Lines
 - Staging Area
 - Crane Pad
 - Met Tower Power and Data Cabling
 - Setbacks**
 - Property Line Setback (80m)
 - Road Setback (5.7)
 - Waterbody Setback (30m)
 - Wooded Area Setback (120m)



- Notes**
1. Coordinate System: UTM Zone 17 NAD 83
 2. Data Sources: Ontario Ministry of Natural Resources © Queens Printer Ontario, 2009; © Ontario Gas and Salt Resources Library, 2010
 3. Image Sources: © First Base Solutions, 2010 - Imagery Date: Spring, 2006



Stantec

December 2010
160960567

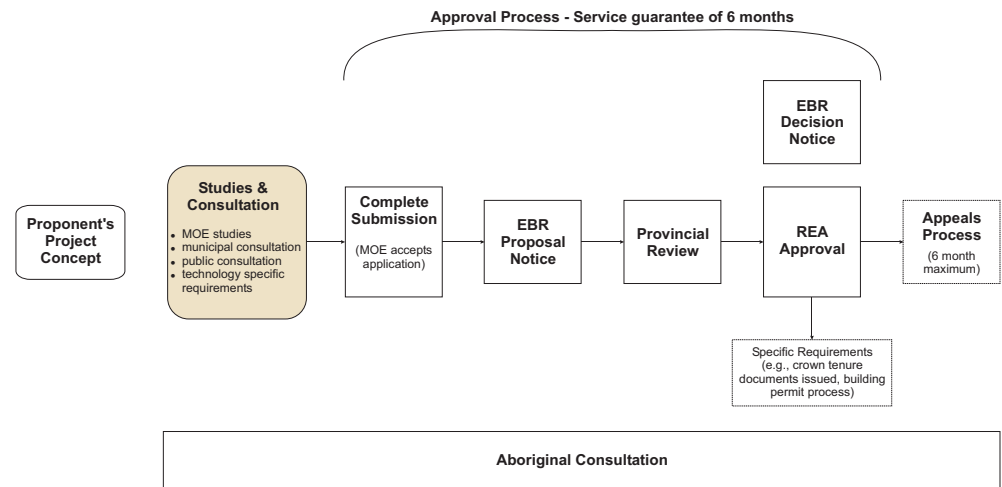
Client/Project
**ZEPHYR FARMS LIMITED
BROOKE-ALVINSTON WIND FARM**

Figure No
1.0 DRAFT

Title
**SITE PLAN- FACILITY COMPONENTS,
CULTURAL/ NATURAL FEATURES
AND WATERBODIES**

Renewable Energy Approval Process

- Zephyr Farms Limited is completing the process required to obtain a Renewable Energy Approval (REA) for the Project.
- The REA is issued under Ontario Regulation 359/09 (Renewable Energy Approvals under Part V.0.1 of the Act) under the *Environmental Protection Act*.
- The project is considered a Class 4 wind facility, and has specific study and information requirements under the REA process.
- The REA approval will specify how the project will be designed, built, operated and decommissioned.
- Zephyr Farms has completed the technical work required to apply for a REA.
- Additional approval and permitting requirements from such agencies as the St. Clair Region Conservation Authority will be addressed prior to construction. Permits and approvals will also be sought from relevant municipalities prior to construction.



Renewable Energy Approval Process - Required Reports

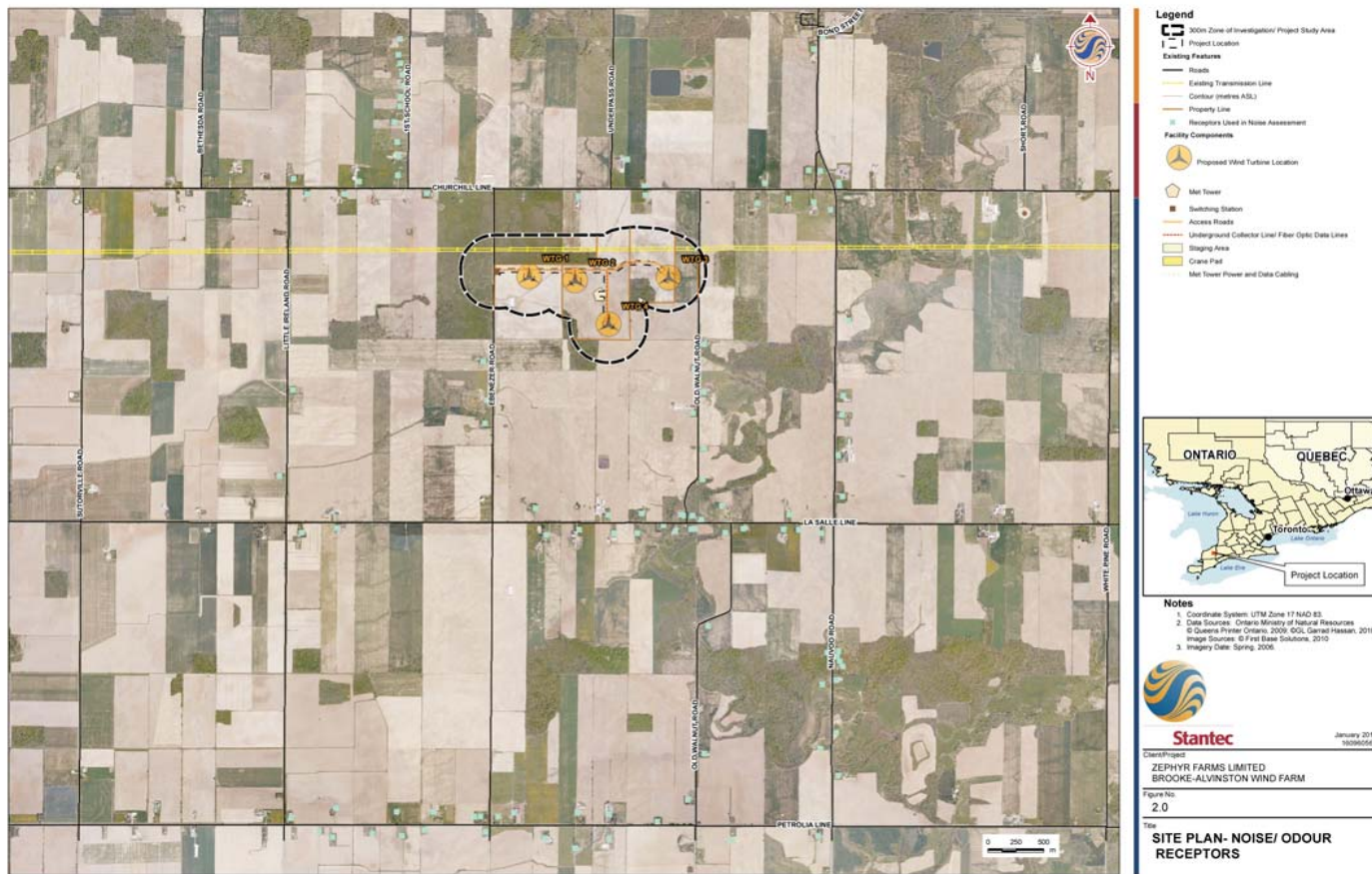
The following draft reports were prepared and circulated for a 60-day public review (available at: www.oneworldenergy.com). The final reports, including a Consultation Summary Report, will be submitted as part of the REA application.

- Project Description Report
- Construction Plan Report
- Design and Operations Report
- Decommissioning Plan Report
- Wind Turbine Specifications Report
- Water Report
- Natural Heritage Assessment Report
- Heritage Assessment Report
- Stage 1 and Stage 2 Archaeological Assessment Report



Imagery Source: CanWEA.

- An Environmental Noise Impact Assessment has been completed for the Project to ensure it complies with the MOE's Noise Assessment regulatory requirements.
- Sound produced by the Project was found to be within the limits established by the MOE at all noise receptors.



Project Details - Construction

Project construction is planned for the Summer and Fall of 2011 by RES Canada Construction LP. Facility and temporary components during construction will include:

- **Access Roads:** 2.3 km of 5 m wide gravel access roads, underground 27.6 kV collector lines and fibre optic cables, and temporary staging areas.
 - **Switching Station:** a switching station located beside the access road at Ebenezer Road.
 - **Turbine Locations:** turbine tower, foundation, and temporary crane pads and staging areas.
 - **Meteorological Tower:** meteorological (met) tower, underground power and data cabling, and a temporary access route.
- Dust will be mitigated to the extent practical through the use of industry practices such as dust suppressants, protecting stockpiles, and covering loads of friable material during transport.
 - To the greatest extent possible, noise will be restricted to regular construction hours.
 - A Traffic Management Plan will be developed in consultation with the municipalities to ensure public safety is maintained and to minimize potential traffic issues.
 - Consultation is on-going with the municipalities regarding structural enhancements and restoration to roads.

Project Details - Operations and Decommissioning

- The Project will be operated and maintained by Zephyr Farms, with the turbine manufacturer and a qualified and experienced Operations and Maintenance Contractor performing specific maintenance activities.
- A SCADA system will monitor the turbines on-line in real time, which will identify any potential problems so that pro-active inspection and maintenance can be undertaken.
- An Emergency Response and Communications Plan will be developed outlining a communications plan, a complaint response protocol and a public safety plan.
- The Project may be repowered or decommissioned at the end of the Project's 20 year contract with the Ontario Power Authority.
- Decommissioning would include the dismantle and removal of facility components; components would be recycled or reused wherever possible.
- The Project lands would be returned to a safe and clean condition in accordance with requirements in effect at the time and the lease agreement with the landowner.

Project Details - Natural Environment and Heritage Surveys

- Field investigations have been completed for natural environment and heritage features.
- Aquatic field investigations determined that there are no water bodies within or near the Project location.
- Terrestrial field investigations determined that there are no significant natural heritage features within 120 m of the Project location.
- Heritage field investigations found no significant built heritage features within or near the Project location.
- Archaeological investigations did not recover any materials of significant cultural heritage value or interest within the Project location.



Project Details - Summary of Potential Environmental Effects

- General construction best practice mitigation measures (erosion and sediment control, dust suppression, etc.) will be utilized for the Project.
- No site-specific mitigation measures are required.
- Vegetation clearing will be limited to a portion of one hedgerow.
- No direct impacts to wildlife or wildlife habitat will occur.
- Impacts to agricultural lands will be minimized through a controlled project footprint, and soil rehabilitation will occur in accordance with the landowners' lease agreement.



Project Details - Construction and Post-Construction Monitoring

- During construction, monitoring will occur for:
 - Erosion and sediment control measures;
 - Dust suppression; and
 - Project boundaries.
- Post-construction, monitoring will occur for:
 - Road stability;
 - Re-vegetation measures;
 - Soil rehabilitation; and
 - Bird and bat mortality.
 - Twice weekly (3-4 day intervals) mortality monitoring from May 1 to October 31, and weekly monitoring for raptors during November, for a period of three years.
- Turbines will be monitored electronically 24 hours/day, 7 days/week, to allow operation changes to be noted and assessed quickly.



Health and Safety

- Public safety measures will be incorporated into all phases of the Project.
- Implementing transportation planning and safety measures during construction will minimize the potential for traffic related safety concerns.
- The Project's wind turbines will be maintained and operated in accordance with applicable codes and regulations.
- Built-in safety measures, and standard procedures for wind turbine operation and maintenance and control systems, will help protect physical safety.

Local Benefits

Improves Air Quality

- Wind power has a significantly smaller environmental footprint compared to conventional electricity generation. The result is cleaner air, improved health, and a tool to fight climate change.

Creates Jobs

- The Project will create local jobs and economic development from construction and operation activities.

Supports Farmers

- Lease payments from wind farms help sustain the local agricultural industry and promote economic stability.

Enhances Community

- The Project will provide taxes to support local services.



Image Source: CanWEA.

Project Schedule Overview

- Draft REA Report Public Review Period - December 16, 2010 to February 17, 2011
- Final Public Open House - February 17, 2011
- Due date for public comment inclusion in the REA Reports - February 24, 2011
- Submission of the final REA Application - end of February, 2011
- 30-day Environmental Registry public review period - TBD by MOE
- Project Construction (if approved) - Summer/Fall 2011
- Commercial Operation - Fall 2011
- Decommissioning - After approximately 20 years

