

## **Appendix D**

### **Open House #1 Display Boards**



## Who Are We?

Zephyr Farms Limited is the owner of the Brooke-Alvinston Wind Farm.

Zephyr Farms Limited is owned by Oneworld Energy Inc., a Canadian-based international renewable energy company, through their Canadian wind development subsidiary Green Breeze Energy Inc.

Green Breeze Energy Inc. was one of the first Ontario-based wind energy developers, establishing operations in 2003.



Imagery Source: CanWEA.

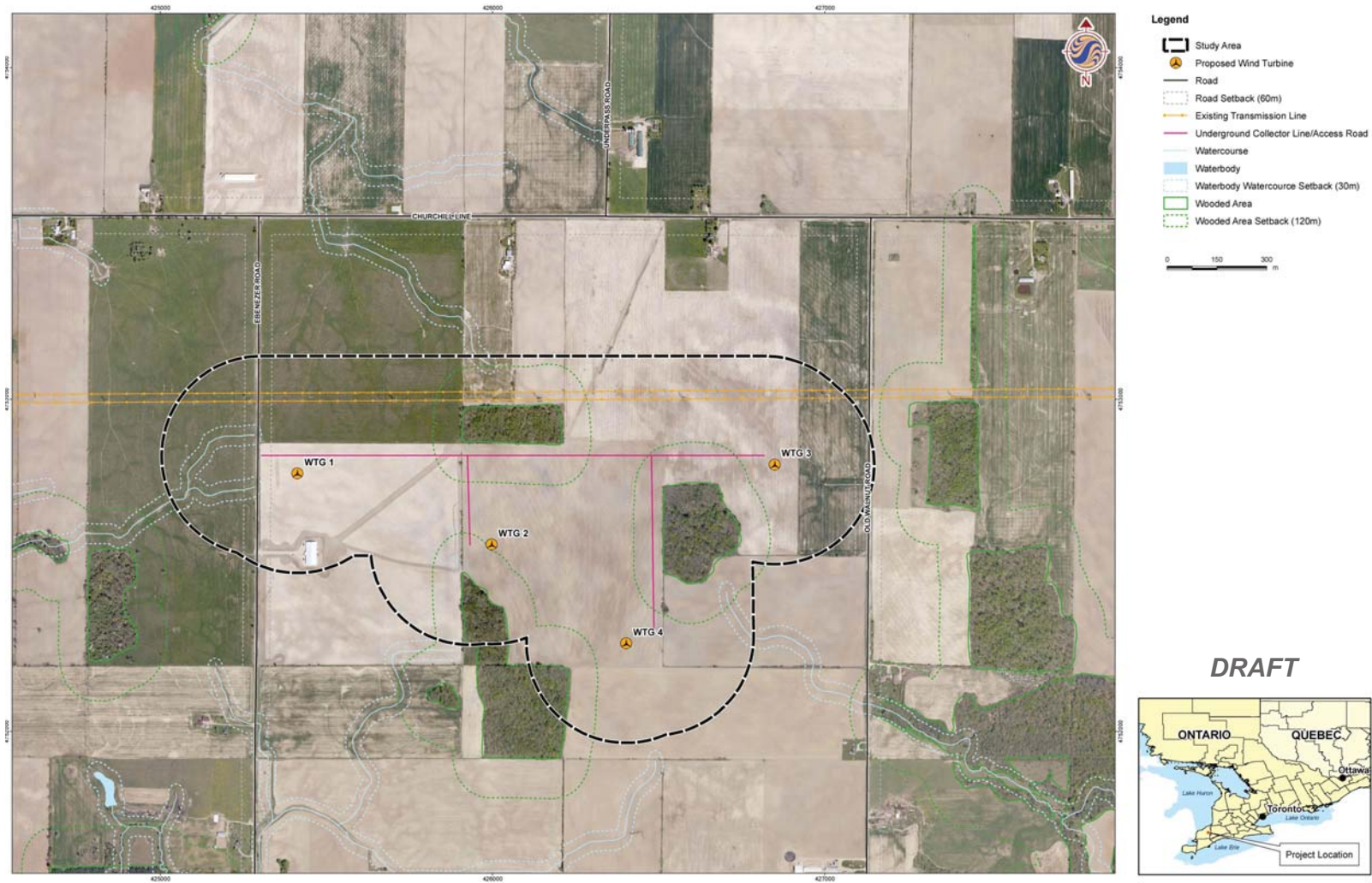
## Brooke-Alvinston Wind Farm - Project Overview

- The project has been awarded a Power Purchase Agreement with the Ontario Power Authority (RESOP 11836).
- Four 2.5 MW Samsung wind turbines, for a name plate capacity of 10 MW.
- Additional components are access roads and electrical collector lines (underground).
- Turbines will be located a minimum of 650m from non-participating receptors.
- All project components will be situated on privately owned land and municipal right-of-way.



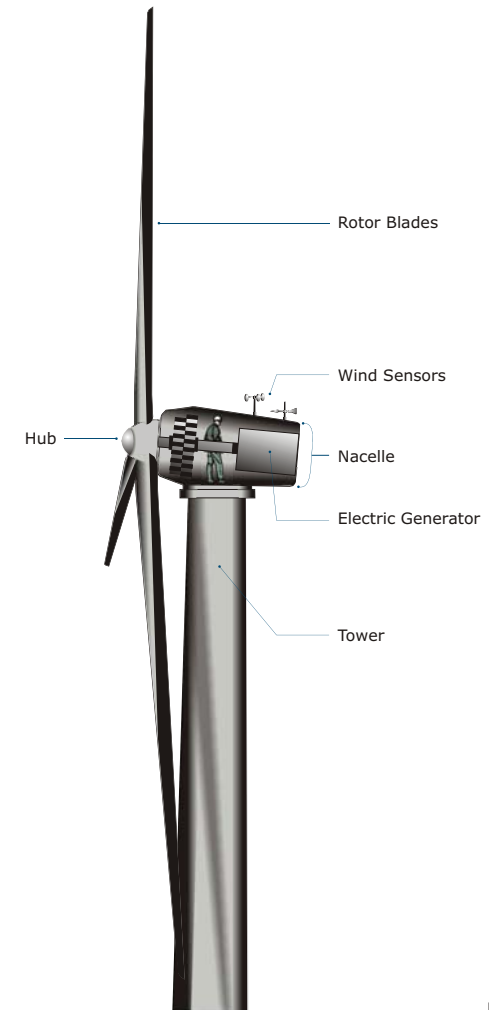
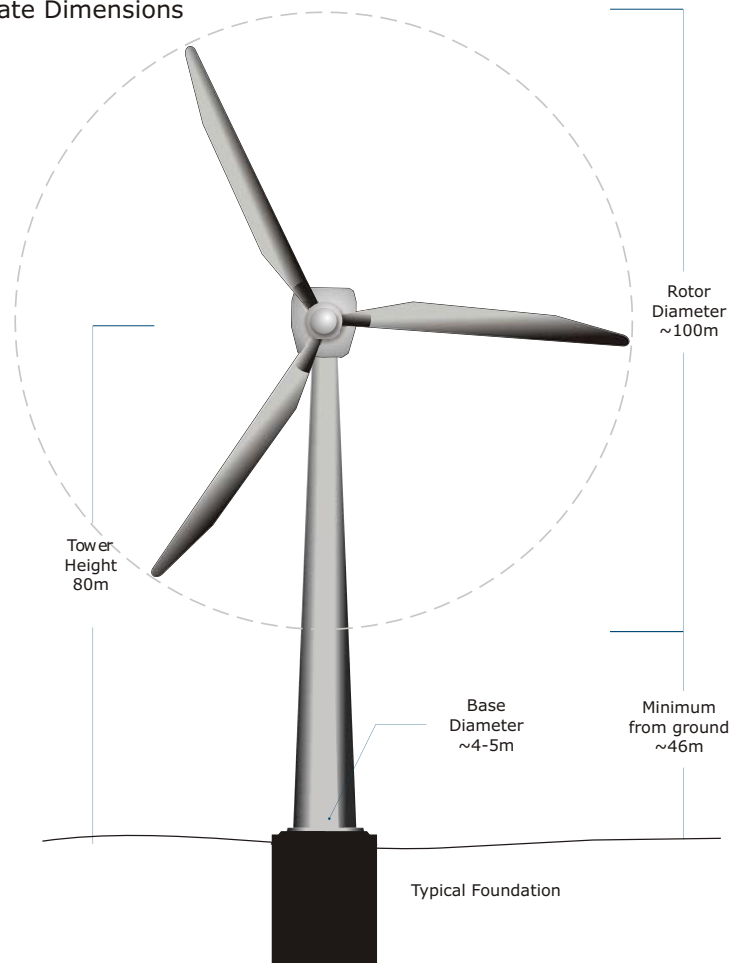
Imagery Source: CanWEA.

## Project Location and Environmental Features



## Typical Wind Turbine

Approximate Dimensions



Note: not to scale











## Community Benefits

- During its lifespan, the project will create direct construction jobs and permanent operations and maintenance jobs.
- Additional tax payments to local municipalities.
- No emissions of greenhouse gases or air pollutants from operation of the project.
- Displaces the need for new projects that generate greenhouse gas emissions.
- Assist in Ontario's goal to create over 50,000 "green collar" jobs.
- Provides a new supply of safe, clean and reliable electricity.



Imagery Source: CanWEA.

## Environmental Investigations and Benefits

Field investigations have been completed for aquatic and terrestrial features. There are no water bodies within or near the project location. There are no significant natural heritage features within 120m of the project location.

Please speak to a representative of Stantec if you would like more information about the results of the field investigations. Reports outlining the findings will be made available 60 days before the Final Public Open House.

The following are some of the environmental benefits of wind power:

- It is pollution free
- It doesn't contribute to smog or acid rain
- It utilizes a completely renewable resource
- Generating electricity from wind leaves behind no hazardous or toxic wastes and does not contribute to climate change

**Environmental Impact of Electricity Sources Summary Table**

	Wind	Nuclear	Coal	Natural Gas
Global Warming Pollution	None	None	Yes	Yes
Air Pollution	None	None	Yes	Limited
Mercury	None	None	Yes	None
Mining / Extraction	None	Yes	Yes	Yes
Waste	None	Yes	Yes	None
Water Use	None	Yes	Yes	Yes
Habitat Impacts	Yes	Yes	Yes	Yes

Derived from Source: AWEA/fact sheets/Wind Energy and Wildlife/If not wind, then..?

## Project Schedule Overview

- Initiate Public REA Process - July 2010
- Perform REA Technical Studies - Ongoing through to REA application
- Public Open House #1 - August 2010
- Draft REA Reports to Public - August/September 2010
- Public Open House #2 - October 2010
- REA Approval - Spring 2011
- Start of Construction - Spring/Summer 2011
- Commercial Operation Date (COD) - Fall 2011
- Repowering/Decommissioning - 2036 (approximately 25 years after COD)



Imagery Source: CalWEX

