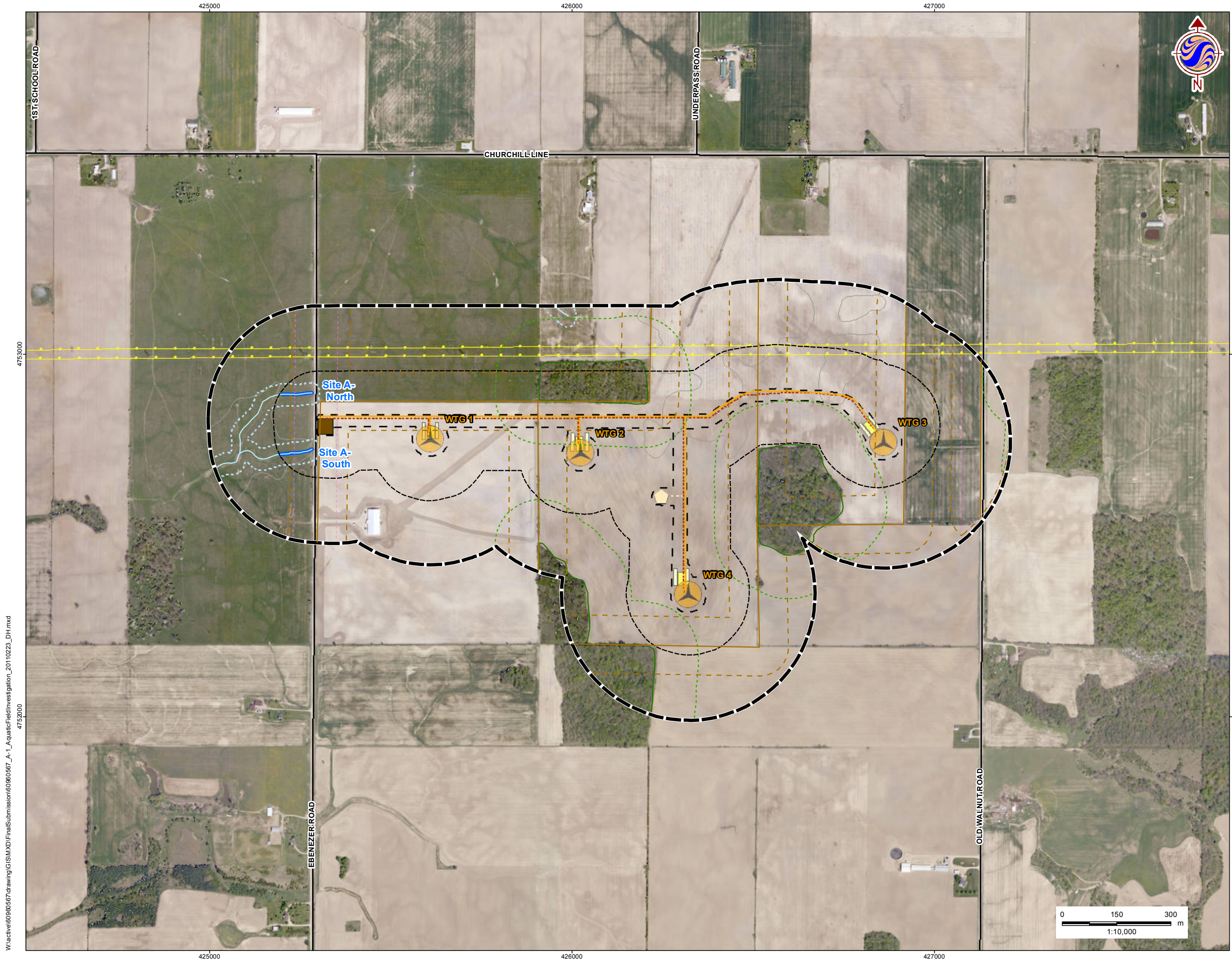


Appendix A

Figure



W:\active\60960567\drawing\GIS\MXD\Final\Submission\60960567_A-1_AquaticFieldInvestigation_20110223_DH.mxd

- Legend**
- 300m Zone of Investigation/ Project Study Area
 - 120m Zone of Investigation
 - Project Location
 - Existing Features**
 - Roads
 - Existing Transmission Line
 - Contour (metres ASL)
 - Property Line
 - Cultural/ Natural Features and Water Bodies**
 - Watercourse (as per MNR base mapping)
 - Aquatic Field Investigation Site
 - Wooded Area (as per LIO base mapping)
 - Facility Components**
 - Proposed Wind Turbine Location
 - Met Tower
 - Switchyard
 - Access Roads
 - Underground Collector Line/ Fiber Optic Data Lines
 - Staging Area (Temporary)
 - Crane Pad (Temporary)
 - Met Tower Power and Data Cabling
 - Setbacks**
 - Property Line Setback (80m)
 - Road Setback (58.7)
 - Waterbody Setback (30m)
 - Wooded Area Setback (120m)



- Notes**
1. Coordinate System: UTM Zone 17 NAD 83.
 2. Data Sources: Ontario Ministry of Natural Resources © Queens Printer Ontario, 2009; © Ontario Gas and Salt Resources Library, 2010.
 3. Image Sources: © First Base Solutions, 2010 - Imagery Date: Spring, 2006.



Stantec February 2011
160960567

Client/Project
ZEPHYR FARMS LIMITED
BROOKE-ALVINSTON WIND FARM

Figure No.
A.1

Title
AQUATIC FIELD INVESTIGATION SITES

